

DATASHEET

ATM Cellular Routers™

Cellular Connectivity for ATM Terminals



PRODUCT HIGHLIGHTS

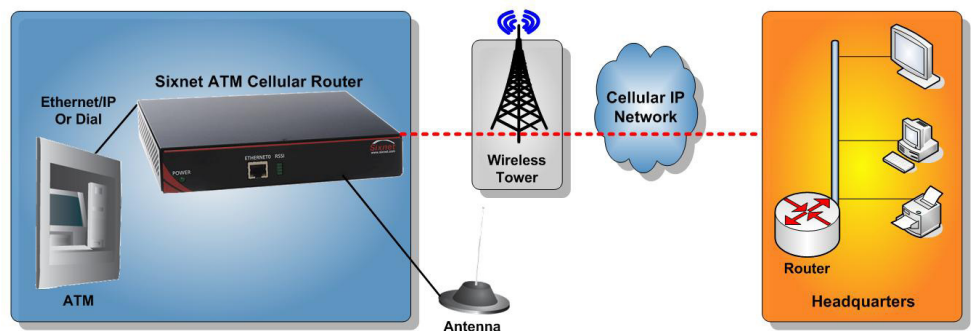
- Financial processor approved
- Plug and play installation
- Support for ATM management programs
- Built-in firewall and SSL
- PCI compliant
- Remote management via SixView Manager

APPLICATIONS

- ATMs
- Kiosks
- Mobile ATMs

Sixnet's ATM Cellular Routers™ use cellular technology to provide cost-effective, highly reliable connectivity for Automated Teller Machines (ATMs). Financial processor approved and recommended, the "plug and play" ATM routers reduce complexity and streamline deployment. Complete with integrated routing, security and support for all ATM management programs, our easy-to-use routers provide a seamless connection to ATM switch applications.

Sixnet ATM Cellular Routers are remotely manageable via SixView™ Manager, Sixnet's enterprise-class management software. SixView Manager offers user-friendly, web-based management and monitoring services. Additionally, SixView Manager enables users to remotely configure, update and distribute firmware to multiple routers, thereby saving time and money.



FEATURES & BENEFITS

Cellular Advantages

- **Lowers installation and operational costs**
- **Simplifies deployment and management of ATM networks**
 - Plug and play installation
 - Eliminates dial-up phone lines
 - Cheaper and easier to deploy devices
 - Easier to repair cellular issues than to fix cable breaks

Remote Management & Monitoring

- **Speeds configuration and management**
- **Simplifies problem determination**
 - Remote administration and management of multiple routers from a single console
 - Reporting of key metrics
 - Remote configuration and updates
 - Integrated management capabilities

Reliable Operations

- **Minimizes downtime of business critical applications**
- **Protects against unwanted intrusion**
 - Advanced SSL and VPN features
 - High-speed cellular connectivity
 - Built-in security

Industry Standard Technology

- **Reduces complexity**
- **ATM diagnostic management program support**
 - Converts RJ-11 dial tone to cellular
 - Financial processor approved and recommended
 - ATM diagnostic management programs supported
 - PCI compliant technology
 - ATM configuration services

ATM Cellular Routers

Cellular Connectivity for ATM Terminals

SPECIFICATIONS

Cellular Radio Options:

- CDMA:
 - 2G 1xRTT
 - 3G EVDO Rev. A
- GSM:
 - 3G HSDPA
- USB Aircard support available

IP

- IP transparency
- NAT/PAT

Security

- IPSec/VPN
- SSL
- Stateful inspection firewall

Interfaces

- 1x RJ45 10/100 Mbps autosensing
- 1x RS-232 Serial console port
- 1x RJ-11 dial tone (optional)

LED Status Indicators

- Power
- WAN
- Signal
- GPS
- RS232
- Ethernet link
- Ethernet activity

Management

- Remote unit monitoring
- Web-based management
- Sixnet or customer hosted

Physical

- 1x reset button
- 1x ignition sense
- 4x digital inputs
- 3x digital outputs
- 3x analog inputs

Power & Environmental

- 11V AC (US); 220V AC (International)
- Operating temp: -40°C to +60°C
- Humidity: 95% non-condensing

Dimensions

- 7.75" x 1.44" x 6.20"
- 19.7cm x 3.7cm x 15.7cm

Hardware

- CPU: PowerPC RISC
- Ethernet: one (1) RJ45
- Console serial port: one (1) DB-9
- RJ-11 dial tone (optional)
- Radio: Sierra 5727, 8790 or 8795 PCI express minicards
- Antenna: external, SMA connector

Approved Processors

- RBS WorldPay - Lynk
- Data Stream - ASAI
- Elan
- Columbus Data Systems
- Metavante

Available Configuration Services

- Universal Money
- eFunds
- Cash Depot - Satellite Receivers
- Star Financial Bank
- Elan

ABOUT SIXNET

For more than three decades, Sixnet has been providing leading industrial and commercial machine-to-machine (M2M) connectivity to customers and markets worldwide. Sixnet's flexible solutions enable organizations to cost-effectively increase business productivity. By integrating powerful enterprise-class features with rugged reliability, Sixnet meets the standards of the most demanding industrial and commercial applications in industries such as power & energy, banking & retail, transportation, video & security, utilities, military, mobile data, maritime and more. Based in Ballston Lake, NY, the company has offices across North America, Asia and Europe.

For more information, visit www.sixnet.com, email sales@sixnet.com or call +1 518 877 5173

SELECTION GUIDE

Ethernet/IP Model	Dial Port Model	Connection Type
A-2200	A-2201	2G
A-2300	A-2301	3G
A-1100	A-1101	Aircard

Note: Dial ATMs - 2G connectivity represents the best value

SIXVIEW MANAGER

Powerful Remote Management and Monitoring Software

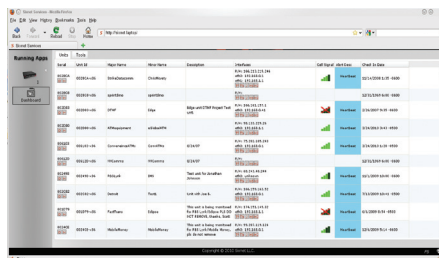
With SixView Manager's enterprise-class network management features, users have access to:

Remote Monitoring & Reporting of Key Metrics

- Uptime
- Utilization
- Signal strength (RSSI)
- Firmware version, ESN, MDN, IMEI
- IP Address

Remote Administration

- Mass configuration changes and updates
- Remote executable (i.e., reboot)



Sixnet, LLC Corporate Headquarters
331 Ushers Road, Ballston Lake, NY 12019

T +1 518 877 5173 F +1 518 877 8346

FLEXIBLE. RELIABLE. POWERFUL.

© 2010 Sixnet. All Rights Reserved.

July 2010