

## GATEWAY ADMINISTRATION UTILITY (GAU)

The GAU is available for C130s with firmware versions **v2.09** and beyond.

### GAU ACCESS

#### 1. Establish a connection between the PC and the JBM Electronics Gateway

##### METHOD 1: ETH0 (Straight Ethernet Port)

- Connect a crossover CAT-5 Ethernet cable between the local PC and the JBM unit's ETH0. **Verify the link LED is lit.** (Straight cable from a HUB/Switch)

##### METHOD 2: ETH1 DHCP Server by default (Crossed Ethernet Port)

- Connect straight CAT-5 Ethernet cable between the local PC and the JBM unit's ETH1. **Verify the link LED is lit.** (Crossover cable for HUB/Switch)

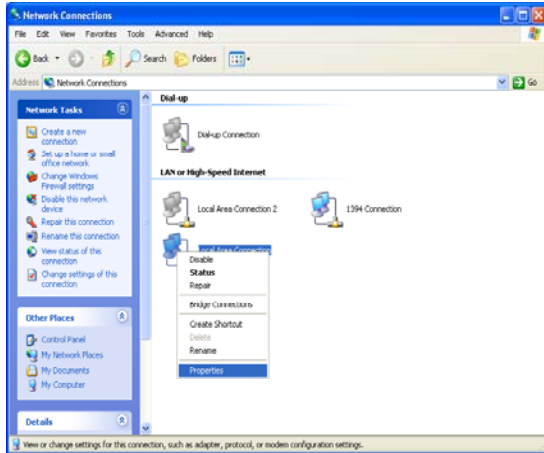
Port	Cable	Device
Straight (ETH0)	Straight	HUB or Switch
Straight (ETH0)	Crossed	PC
Crossed (ETH1)	Straight	PC
Crossed (ETH1)	Crossed	HUB or Switch



Note: This example shows cabling to a PC. The link LED is not lit for ETH1.  
Without a link LED lit either Method 1 must be used or the cabling must be checked.

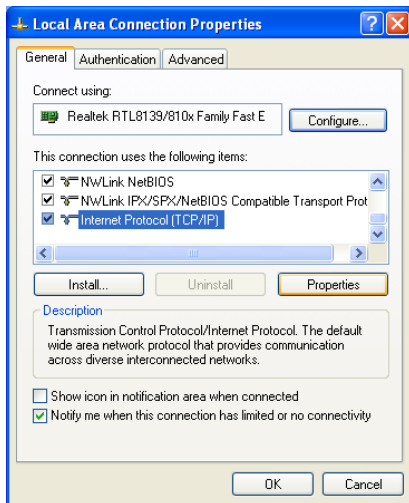
## 2. Setup the PC's IP Address

Change the PC's IP Address by going to control panel and selecting network connections, the screen below will appear:

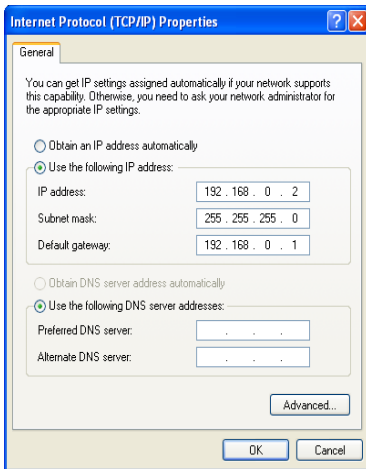


- Right Click **“Local Area Connection”** and select **“Properties”** (as shown to the left).

*NOTE: The screens and instructions displayed are based on Windows XP. Your system may be different. If you have any problems contact your system admin.*

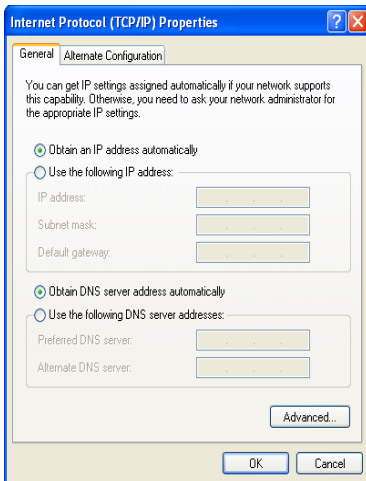


- Scroll down to the bottom of the following items and select **“Internet Protocol (TCP/IP)”** (as shown to the left).



## METHOD 1: PC to ETH0

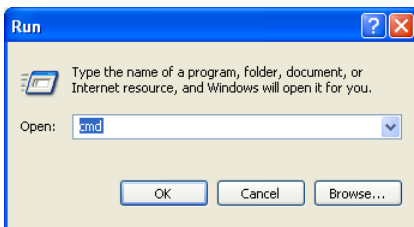
- *Select “Use the following IP address” and fill in the blank fields with the information below:*
  - *IP address 192.168.0.2 (as shown to the left)*
  - *Subnet mask 255.255.255.0*
  - *Default gateway 192.168.0.1*
  - *Preferred DNS 192.168.0.1*
  - *Click “OK”*
  - *The previous screen will appear Click “OK”*



## METHOD 2: PC to ETH1

- *Select “Obtain IP address automatically”*
- *Select “Obtain DNS server address automatically”*
  - *Click “OK”*
  - *The previous screen will appear Click “OK”*

- *Verify that the IP change was accepted or acquired on the PC.*



- *Select “Start>Run on your desktop ”*  
*Type “cmd” Click “OK”*

```

C:\WINDOWS\system32\cmd.exe
C:\>
C:\>
C:\>
C:\>
C:\> ipconfig

Windows IP Configuration

Ethernet adapter Local Area Connection:

    Connection-specific DNS Suffix  . : jbmoff.com
    IP Address. . . . . : 192.168.31.159
    Subnet Mask . . . . . : 255.255.248.0
    Default Gateway . . . . . : 192.168.30.1

Ethernet adapter Local Area Connection 2:

    Connection-specific DNS Suffix  . :
    IP Address. . . . . : 192.168.0.34
    Subnet Mask . . . . . : 255.255.255.0
    Default Gateway . . . . . : 192.168.0.35

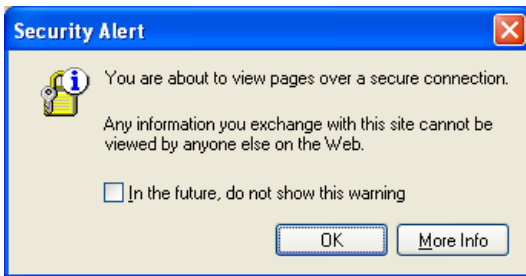
C:\>

```

- Type “**ipconfig**” <Enter>
  - METHOD 1 should display an IP of 192.168.0.2
  - METHOD 2 should display an IP of 192.168.1.x

### 3. Login into the GAU

- Open a web browser and enter the following in the address bar:
  - METHOD 1: <https://192.168.0.1:10000/> or <https://192.168.0.1/>
  - METHOD 2: <https://192.168.1.1:10000/> or <https://192.168.1.1/>



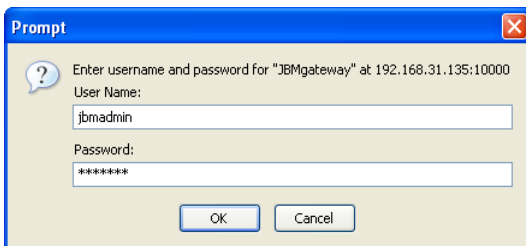
- You will receive an alert that you are about to view pages over a secure connection, *click* “**OK**”

*NOTE: The screens and instructions displayed are based on Microsoft Internet Explorer. Your system may be different. If you have any problems contact your system admin.*



- You will receive a certificate alert that information you send with this site cannot be viewed or changed by others.
- Ignore the warning that it is not trusted, *click* “**Yes**”

- After you accept the certificate the login prompt will appear.



### JBMgateway Login Instructions

- For User Name enter: **jbmadmin**  
*(Use lowercase letters)*
- For Password enter: **six digit serial number** of unit  
*(Use lowercase letters)*