



Replacement Guide for SixTRAK I/O Modules

March 26, 2010

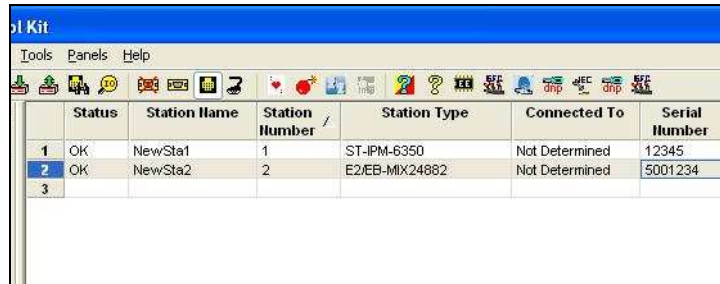
After 13 years the SixTRAK I/O module line will be going end of life. The EtherTRAK-2 is its replacement. The EtherTRAK-2 offers superior performance at a better price per I/O point. This document will help determine the best EtherTRAK-2 replacement for the SixTRAK I/O Module line. Below is a one-to-one replacement of SixTRAK to EtherTRAK-2 replacements.

End Of Life Product					Replacement					
SixTRAK	DI	DO	AI	AO	EtherTRAK-2	Description	DI	DO	AI	AO
ST-DI-024-08F/U	8	0	0	0	E2-16DI24-D	10-30VDC	16	0	0	0
ST-DI-120-08F/U	8	0	0	0	E2-16DIAC-D	60-140VAC	16	0	0	0
ST-DI-024-16H	16	0	0	0	E2-32DI24-D	10-30VDC	32	0	0	0
ST-MIX16880-D	16	8	8	0	E2-MIX24880-D	Combo I/O	24	8	8	0
ST-MIX12884-D	12	8	8	4	E2-MIX24882-D	Combo I/O	24	8	8	2
ST-DI-024-32D	32	0	0	0	E2-32DI24-D	10-30VDC	32	0	0	0
ST-DI-CNT-08U	8	0	0	0	E2-16CNT-D (Coming Soon)	High-speed counter	16	0	0	0
ST-DO-DC1-08F/U	0	8	0	0	E2-16DO24-D	10-30VDC	0	16	0	0
ST-DO-DC2-16H	0	16	0	0	E2-32DO24-D	10-30VDC	0	32	0	0
ST-DO-RLY-06U	0	6	0	0	E2-16RLY-D (Coming Soon)	Relay DO	0	16	0	0
ST-AI-INS-08U	0	0	8	0	E2-16ISOTC/ 16ISOAI-D (Coming Soon)	isolated thermocouple and 4-20mA	0	0	16	0
ST-AI-20M-08F	0	0	8	0	E2-32AI20M-D	4-20mA	0	0	32	0
ST-AI-20M-16H	0	0	8	0	E2-32AI20M-D	4-20mA	0	0	32	0
ST-AI-10V-08F	0	0	8	0	E2-32AI10V-D	0-10V in	0	0	32	0
ST-AI-RTD-06U	0	0	6	0	E2-10RTD-D (Coming Soon)	RTD	0	0	10	0
ST-AO-20M-04F	0	0	0	4	E2-8AO20M-D	4-20mA out	0	0	0	8
ST-AO-20M-08F	0	0	0	8	E2-8AO20M-D	4-20mA out	0	0	0	8

Industrial & Commercial Networking

There are some differences between the SixTRAK and EtherTRAK-2 module within the SIXNET I/O Tool Kit configuration. The below explains how to add EtherTRAK-2 modules to a IPm controller.

EtherTRAK-2's are added to Sixnet project file as a separate station. In figure1 below an ST-IPm-6350 and the E-MIX24882-D are pictured in the same project file.



	Status	Station Name	Station Number	Station Type	Connected To	Serial Number
1	OK	NewSta1	1	ST-IPM-6350	Not Determined	12345
2	OK	NewSta2	2	E2/EB-MIX24882	Not Determined	5001234
3						

Figure 1

Since they are configured as two separate devices communication between the devices must be configured. To do this create a remote I/O link module in the I/O modules tab of the IPm controller. Figure 2 shown below shows how the remote I/O link module can be added by clicking the “Add New Module” button in the I/O modules tab.

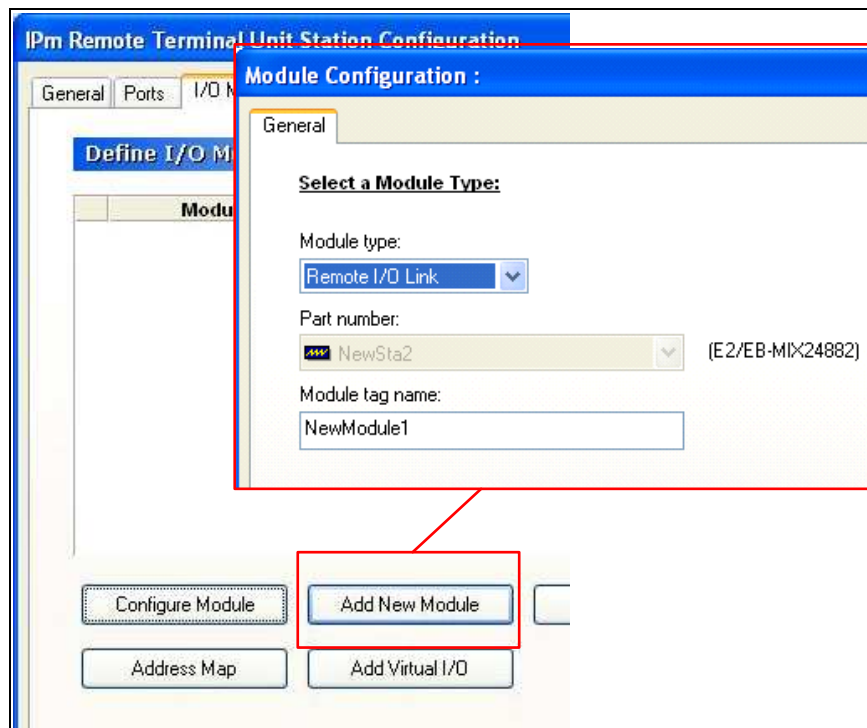


Figure 2

Industrial & Commercial Networking

Once selected the Remote I/O Link wizard will step through the process of configuring the EtherTRAK-2 module. In the first window of the wizard a name should be configured (See figure 3).



Figure 3

In the remote I/O link options tab the communication parameters can be defined. The typical set up will be using UDP or TCP/IP and the EtherTRAK-2's destination IP (See Figure 4).

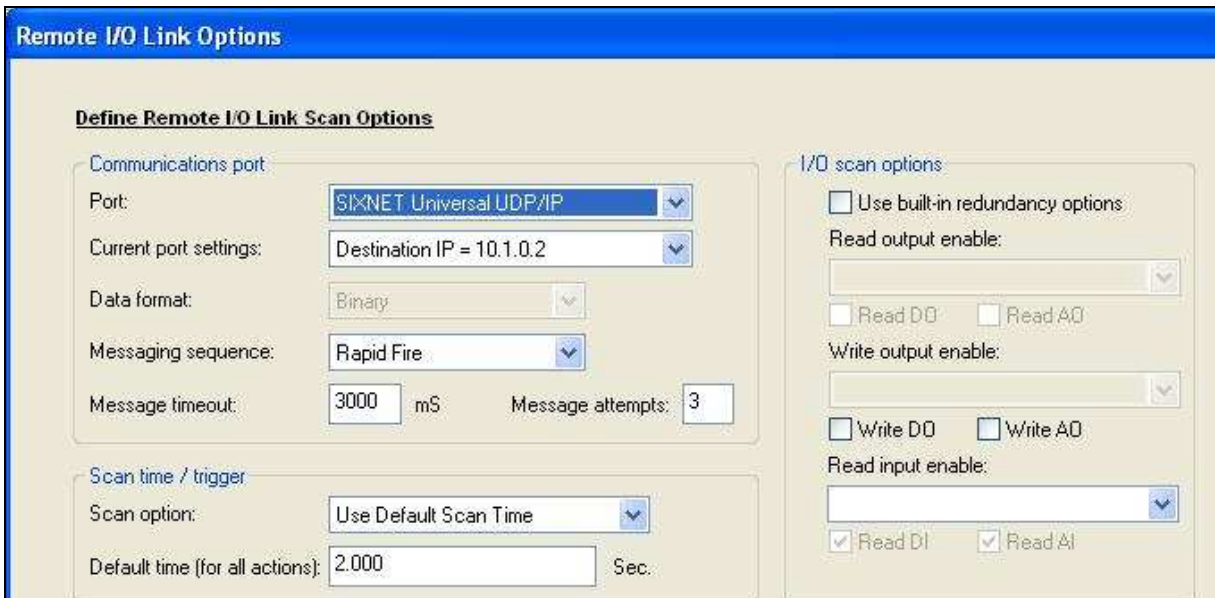


Figure 4

Industrial & Commercial Networking

Discrete options and analog options are parameters that define which registers in the IPm controller will be used (See Figure 5 and 6).

Figure 5

Figure 6

The discrete and analog tags windows are where the register tag names are configured. If the tags were already defined in the EtherTRAK-2 module configuration, then they can be imported into the IPm configuration using the import remote I/O tags button (See Figure 7 and 8).

I/O Type	I/O Address	I/O Tag Name	OFF Message	ON Message	Feature
D IN	X0				N/A
D IN	X1				N/A
D IN	X2				N/A
D IN	X3				N/A
D IN	X4				N/A
D IN	X5				N/A
D IN	X6				N/A
D IN	X7				N/A
D IN	X8				N/A
D IN	X9				N/A
D IN	X10				N/A
D IN	X11				N/A
D IN	X12				N/A
D IN	X13				N/A
D IN	X14				N/A
D IN	X15				N/A
D IN	X16				N/A
D IN	X17				N/A

Figure 7

I/O Type	I/O Address	I/O Tag Name	Range	Feature 1	Feature 2
A IN	AX0		N/A (Virtual)	N/A (Virtual)	N/A (Virtual)
A IN	AX1		N/A (Virtual)	N/A (Virtual)	N/A (Virtual)
A IN	AX2		N/A (Virtual)	N/A (Virtual)	N/A (Virtual)
A IN	AX3		N/A (Virtual)	N/A (Virtual)	N/A (Virtual)
A IN	AX4		N/A (Virtual)	N/A (Virtual)	N/A (Virtual)
A IN	AX5		N/A (Virtual)	N/A (Virtual)	N/A (Virtual)
A IN	AX6		N/A (Virtual)	N/A (Virtual)	N/A (Virtual)
A IN	AX7		N/A (Virtual)	N/A (Virtual)	N/A (Virtual)
A OUT	AX8		N/A (Virtual)	N/A (Virtual)	N/A (Virtual)
A OUT	AX9		N/A (Virtual)	N/A (Virtual)	N/A (Virtual)
A OUT	AX10		N/A (Virtual)	N/A (Virtual)	N/A (Virtual)
A OUT	AX11		N/A (Virtual)	N/A (Virtual)	N/A (Virtual)
A OUT	AX12		N/A (Virtual)	N/A (Virtual)	N/A (Virtual)
A OUT	AX13		N/A (Virtual)	N/A (Virtual)	N/A (Virtual)
A OUT	AX14		N/A (Virtual)	N/A (Virtual)	N/A (Virtual)

Figure 8

Industrial & Commercial Networking